



KABA®

SIMPLEX®

7 1 0 2

7 1 0 8

SERIES

Installation Instructions

Important: Please keep these instructions. The combination of this lock has been factory preset: 2 and 4 pressed together, then 3.

WARNING

For your own safety, you must change the combination at the time of installation.

PLEASE READ AND FOLLOW ALL DIRECTIONS CAREFULLY

Since every installation is unique, carefully check windows, frame, door, etc. to ensure that the recommended procedures will not cause damage. KABA is not responsible for any damage caused by installation.

Tools Required

- | | |
|------------------------------------|--------------------------------------|
| • 1/4" (6 mm) Drill Bit | • 2 Pairs of Pliers |
| • 1" (25 mm) Wood Chisel | • Hacksaw |
| • 3/4" (19 mm) Hole Saw | • Hammer |
| • Phillips-head Screwdriver | • Center Punch |
| • 1" (25 mm) Drill Bit or Hole Saw | • Drill (variable speed recommended) |
| • 1 5/8" (41 mm) Hole Saw | |
-

Caution: Wear safety glasses when preparing door.

Table of Contents

Checklist2

Determining the Hand of Your Door2

A. Determining the Lock Location3

B. Marking the Door3

C. Drilling Holes in the Door4

D. Making the Bolt Face Plate Cutout4

E. Installing the Bolt5

F. Adjusting the Lock5

G. Installing the Lock6

H. Checking the Locks Operation7

I. Installing the Strike8

J. Setting a New Combination8

K. Instructions for Resetting Unknown Combinations10

L. Troubleshooting12

Templates (Center of Manual)



For technical assistance please call
1-800-849-TECH (8324) or 336-725-1331

CHECKLIST

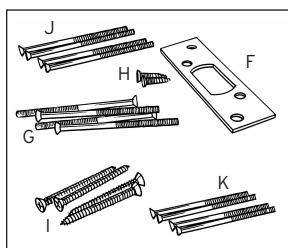
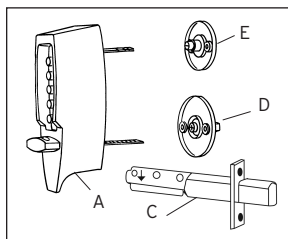
Use this checklist to make sure that everything has been included. ☒

- ☐ A - Front Lock
- ☐ C - Dead Bolt 7102 (2 $\frac{3}{4}$ ") or 7108 (2 $\frac{3}{8}$ ") (model specific)
- ☐ D - Inside Thumbturn Assembly
- ☐ E - Inside Combination Change Assembly

Screw Pack:

- ☐ F - Strike Plate
- ☐ G - 4 thru-bolts (3")
- ☐ H - 2 (bolt) combination wood/metal screws
- ☐ I - 4 combination wood/metal screws
- ☐ J - 4 Thru bolts (2 $\frac{3}{8}$ ")
- ☐ K - 4 Thru bolts (2")

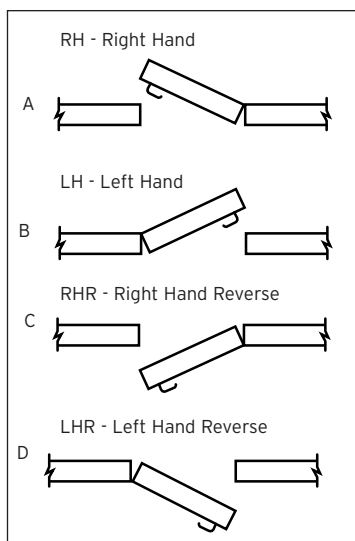
Templates (in center of booklet)



DETERMINE THE HAND OF YOUR DOOR

Many of the installation instructions refer to the handing of your door. The hand of the door is determined with the door in the closed position, from the exterior or pushbutton side of the door.

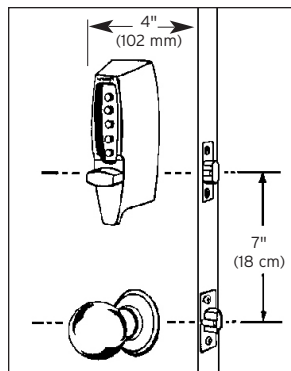
- A) Right Hand Door. Door opens inward (push). Hinged on the right side.
- B) Left Hand Door. Door opens inward (push). Hinged on the left side.
- C) Right Hand Reverse Door. Door opens outward (pull). Hinged on the right side.
- D) Left Hand Reverse Door. Door opens outward (pull). Hinged on the left side.



A. DETERMINING THE LOCK LOCATION

Install the lock with the exterior thumbturn hole at least 7" (18 cm) above your primary lockset so it is comfortable to operate and not in the way when you turn the door knob.

A minimum stile width of 4" (10.16 cm) is recommended for mounting (**See Figure 1-1**).

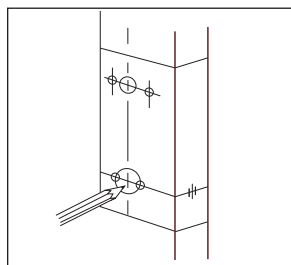


1-1

B. MARKING THE DOOR

NOTE: Be sure to use the correct template (right-hand or left-hand door - 2 $\frac{3}{8}$ " or 2 $\frac{3}{4}$ "). If the wrong template is used, you will have to redrill the door, leaving previously drilled holes exposed.

B-1 Carefully fold the template on 2 $\frac{3}{8}$ " or 2 $\frac{3}{4}$ " line (found in the center of this booklet) (**See Figure 2-1**).



B-2 Tape the template securely to the outside of the door so that all the indicated folds are properly aligned with the edge of the door.

B-3 Use a center punch to make the marks for drilling the seven holes precisely at the points indicated on the template. The center punch mark in the edge of the door must be centered based on the thickness of the door.

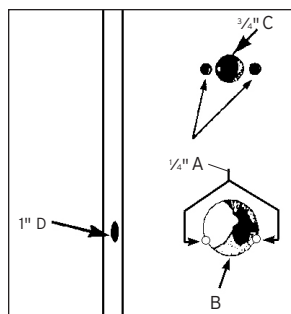
B-4 Remove the template.

C. DRILLING HOLES IN THE DOOR

CAUTION: Positioning and drilling must be done straight to ensure trouble free operation of the 7100 Series lockset. Improper drilling may result in excessive force being exerted on the lock which may result in the premature wearing of its mechanical parts.

You must do C-1 first otherwise it will be impossible to drill the $\frac{1}{4}$ " (6 mm) holes.

C-1 Use a $\frac{1}{4}$ " (6 mm) drill bit to drill the four holes marked **A** (**See Figure 3-1**). Begin drilling at a slow speed and increase the speed gradually until the tip of the drill bit emerges from the other side of the door. Repeat this procedure from the opposite side of the door. This technique will prevent splintering of the door or breaking the drill bit.

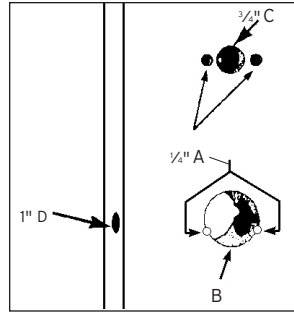


3-1

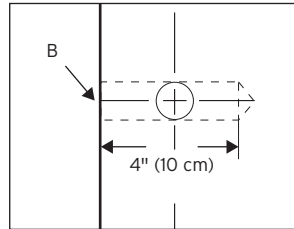
C-2 Use a hole saw with pilot bit to make the 1 5/8" (41 mm) hole (B). Apply pressure evenly until the circular blade cuts the first side of the door and the tip of the pilot bit emerges through the other side, then stop. Drill from the other side until the 1 5/8" (41 mm) hole is completed.

C-3 Repeat C-2 for the 3/4" (19 mm) hole, (C).

C-4 The final 1" (25 mm) hole (D) is crossbored through the edge of the door. Carefully bore 4" (10 cm) deep (See Figures 3-1 and 3-2).



3-1



3-2

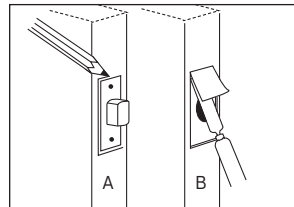
D. MAKING THE BOLT FACE PLATE CUTOUT

This procedure is applicable to wood doors.

D-1 Insert the bolt into the 1" (25 mm) hole until the face plate butts up against the door edge. Draw a line around the face plate. Remove the bolt from the door, A (See Figure 4-1).

D-2 For doors without a beveled edge, use a sharp 1" (25 mm) wood chisel to remove approximately 1/8" (3 mm) of material or enough so the face plate is perfectly flush with the edge of the door, B (See Figure 4-1).

D-3 For doors with a beveled edge, follow step 2 except the face plate will not be flush with the edge of the door, but rather square to the face of the door. In order to accomplish this, you must remove more wood from the higher edge of the door.



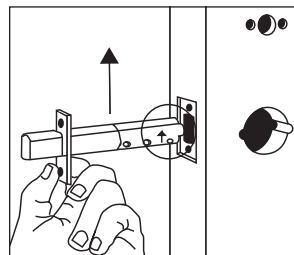
4-1

E. INSTALLING THE BOLT

E-1 Right Hand Door (see template)

a. Insert the bolt, **with the arrow pointing up**, into the 1" (25 mm) hole (See Figure 5-1).

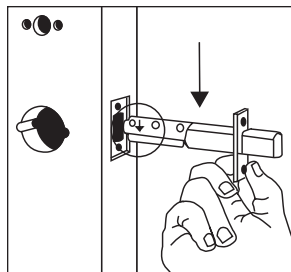
b. Secure the bolt face plate to the door with the two Phillips-head screws provided.



5-1

E-2 Left Hand Door (see template)

- a. Insert the bolt, **with the arrow pointing down**, into the 1" (25 mm) hole **(See Figure 5-2)**.
- b. Secure the bolt face plate to the door with the two Phillips-head screws provided.



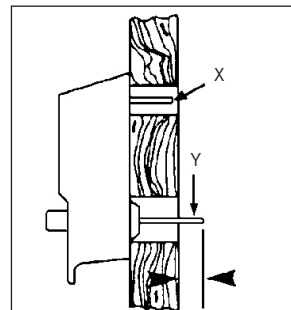
5-2

F. ADJUSTING THE LOCK

The lock has been pre-assembled to accommodate doors up to 2 1/4" (57 mm) thick.

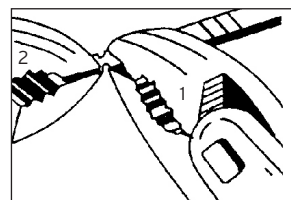
If your door is 1 3/8" to 2" (35 mm to 51 mm) thick, you must shorten both tailpieces **X** and **Y** **(See Figure 6-1)**.

- F-1.** Shorten the combination change tailpiece **X** according to your door thickness. Tailpiece **X** has been premarked for various door thicknesses for accuracy and convenience **(See Figure 6-1)**.



6-1

- a. After determining the breakoff point, hold the tailpiece firmly with a pair of pliers on the lock side of the tailpiece, just beside the desired break line **(See Figure 6-2)**.
- b. With a second pair of pliers, grip the tailpiece at the other side of the line and bend it up and down until it breaks **(See Figure 6-2)**.



6-2

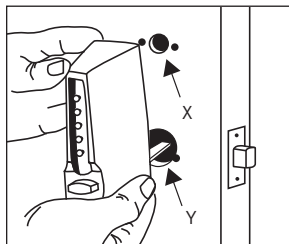
- F-2.** While holding the lockset firmly against the outside surface of the door, **(See Figure 6-1)**, mark tailpiece **Y** at the point where it extends 1/2" - 5/8" beyond the interior surface of the door.

- a. After determining the breakoff point, hold the tailpiece firmly with a pair of pliers on the lock side of the tailpiece, just beside the desired break line **(See Figure 6-2)**.
- b. With a second pair of pliers, grip the tailpiece at the other side of the line and bend it up and down until it breaks **(See Figure 6-2)**.

G. INSTALLING THE LOCK

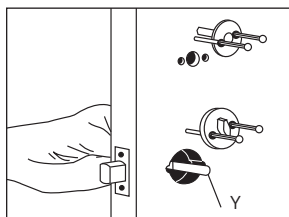
- For 1 $\frac{3}{8}$ " - 1 $\frac{1}{2}$ " (35 mm - 38 mm) thick doors, use the 2 $\frac{3}{8}$ " (44 mm) thru bolts.
- For 1 $\frac{1}{2}$ " - 2" (38 mm - 51 mm) thick doors, use the 2 $\frac{3}{8}$ " (44 mm) thru bolts.
- For 2" - 2 $\frac{1}{4}$ " (51 mm - 57 mm) thick doors, use the 3" (76 mm) thru bolts.

G-1. With the bolt extended in the locked position, mount the lock from the outside of the door. Insert the tailpiece **Y** into the vertical cutout of the bolt assembly and the tailpiece **X** into the $\frac{3}{4}$ " (19 mm) hole (**See Figure 7-1**).



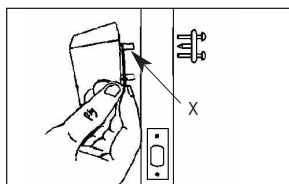
7-1

G-2. Hold the exterior lock assembly firmly against the door. Try the factory-set combination. Press buttons #2 and #4 together, release, press button #3, and release. A distinctive click must be felt to indicate that the button has been correctly depressed. Turn the outside thumbturn to the right (clockwise) to the stop position and release (the bolt should be fully retracted). If not, turn the thumbturn to the left (counterclockwise) to the stop position and repeat Step G-2.



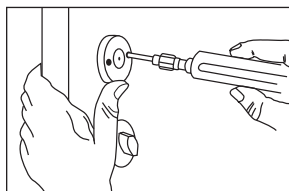
7-2

G-3 While holding the lock firmly against the outside surface of the door with one hand, use the other to mount the inside thumbturn assembly to the interior side of the door with two thru-bolts finger tight (**See Figure 7-2**). Make sure that tailpiece **Y** is engaged into the vertical cutout of the inside thumbturn assembly.



7-3

G-4 Insert tailpiece **X** into the horizontal slot of the combination change assembly. It may be necessary to use a screwdriver to align tailpiece **X** with the combination change assembly (**See Figure 7-3**). Once aligned, secure with two thru-bolts, but do not tighten (**See Figure 7-4**).



7-4

Note: The inside thumbturn is shown in a vertical position to show the two thru-bolts. It may be assembled either vertically or horizontally.

IMPORTANT: Tailpiece **X** must be inserted in the horizontal slot in order to change your combination.

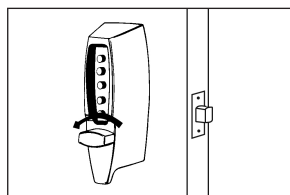
G-5 Make sure that both assemblies are correctly centered over the holes. Tighten the thru-bolts evenly. Uneven tension could cause a malfunction or damage to the lock.

H. CHECKING THE LOCK'S OPERATION

IMPORTANT: The following steps **MUST** be performed while the **DOOR IS OPEN**.

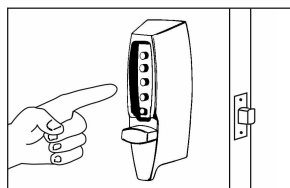
Note: Turning the outside thumbturn to the left (counterclockwise) to the stop position and releasing extends the bolt to the locked position. To retract the bolt from the outside, depress the buttons of your preset combination, then turn the thumbturn to the right (clockwise) to the stop position.

H-1 Turn the outside thumbturn to the left (counterclockwise) until it stops, then release it (**See Figure 8-1**).



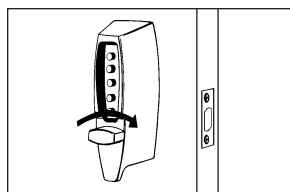
8-1

H-2 Press the preset factory combination (2 and 4 pressed together, release, then 3, and release) (**See Figure 8-2**). A distinctive click must be felt to indicate that the buttons have been correctly depressed.



8-2

H-3 Turn the **outside** thumbturn to the right (clockwise) until it stops; the bolt should fully retract (**See Figure 8-3**). If the bolt does not retract, turn the thumbturn to the left (counterclockwise) until it stops. This will clear previously depressed buttons. Release it and repeat Steps H-2 and H-3.

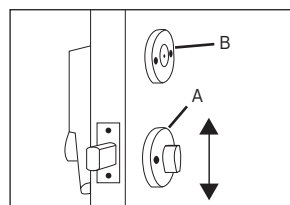


8-3

H-4 Release the **outside** thumbturn; the bolt will stay in the retracted position.

H-5 Turn the **inside** thumbturn **A** to the stop position; the bolt will extend to its locked position (**See Figure 8-4**).

H-6 If the bolt does not retract or extend fully, loosen the two thru-bolts of the inside thumbturn assembly **A** (**See Figure 8-4**). Move the inside thumbturn assembly upward or downward to properly center the inside thumbturn assembly with the tailpiece, then tighten the thru-bolts, and repeat Steps H-1 to H-5.



8-4

H-7 If the bolt still does not fully retract or extend after repeating Step H-6, loosen the two thru-bolts of the inside thumbturn assembly **A** and combination change assembly **B** (**See Figure 8-4**). Move the lock upward or downward to properly align both tailpieces of the inside thumbturn assembly and combination change assembly. Tighten the four thru-bolts and repeat Steps H-1 to H-5 to ensure proper operation.

KABA SIMPLEX® LIMITED WARRANTY

Kaba Access Control warrants this product to be free from defects in material and workmanship under normal use and service for a period of one (1) year. Kaba Access Control will repair or replace, at our discretion, locks found by Kaba Access Control analysis to be defective during this period. Our only liability, whether in tort or in contract, under this warranty is to repair or replace products that are returned to Kaba Access Control within the one (1) year warranty period.

This warranty is in lieu of and not in addition to any other warranty or condition, express or implied, including without limitation merchantability, fitness for purpose or absence of latent defects.

ATTENTION: This warranty does not cover problems arising out of improper installation, neglect or misuse. All warranties implied or written will be null and void if the lock is not installed properly and /or if any supplied component part is substituted with a foreign part. If the lock is used with a wall bumper, the warranty is null and void. If a doorstop is required, we recommend the use of a floor secured stop.

The environment and conditions of use determine the life of finishes on Kaba Access Control products. Finishes on Kaba Access Control products are subject to change due to wear and environmental corrosion. Kaba Access Control cannot be held responsible for the deterioration of finishes.

Authorization to Return Goods

Returned merchandise will not be accepted without prior approval. Approvals and Returned Goods Authorization Numbers (RGA Numbers) are available through our Customer Service department in Winston-Salem, NC (800) 849-8324. **The serial number of a lock is required to obtain this RGA Number.** The issuance of an RGA does not imply that a credit or replacement will be issued.

The RGA number must be included on the address label when material is returned to the factory. All component parts including latches and strikes (even if not inoperative) must be included in the package with return. All merchandise must be returned prepaid and properly packaged to the address indicated.

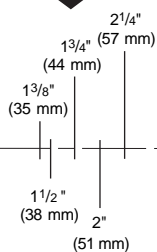
Edge of door for 2 3/4" (70 mm) Backset

7102 / 7108
TEMPLATE
MARK
LEFT HAND DOOR
BORE
STRAIGHT
ACCURATELY

* For both 2 3/8" (60mm) and 2 3/4" (70mm) backsets

IMPORTANT

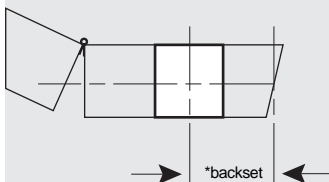
Use this as edge of door when boring hole
Mark center of door thickness



Bore
1" (25 mm) dia.
latch hole

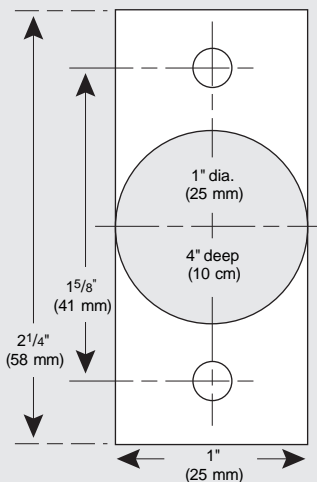
CAUTION

Apply template and drill from the outside but compensate for door bevel if any



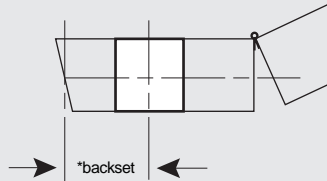
NOTE: Lock will accommodate doors 1 3/8" (35 mm) to 2 1/4" (57 mm) thick. Suitable reinforcement shall be provided by the hollow metal door manufacturer to prevent collapsing of door. When door silencers are to be installed, proper allowances must be made for strike location.

Deadbolt cutout



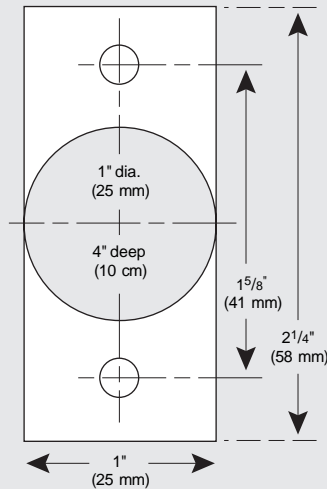
CAUTION

Apply template and drill from the outside but compensate for door bevel if any



NOTE: Lock will accommodate doors $1\frac{3}{8}$ " (35 mm) to $2\frac{1}{4}$ " (57 mm) thick. Suitable reinforcement shall be provided by the hollow metal door manufacturer to prevent collapsing of door. When door silencers are to be installed, proper allowances must be made for strike location.

Deadbolt cutout



7102 / 7108

TEMPLATE

MARK
ACCURATELY

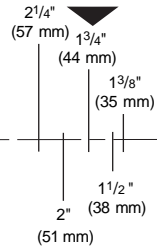
RIGHT HAND DOOR

BORE
STRAIGHT

* For both $2\frac{3}{8}$ " (60mm) and $2\frac{3}{4}$ " (70mm) backsets

IMPORTANT

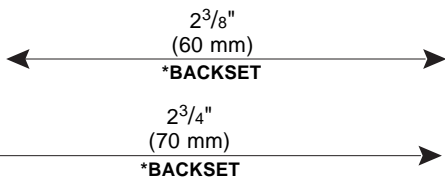
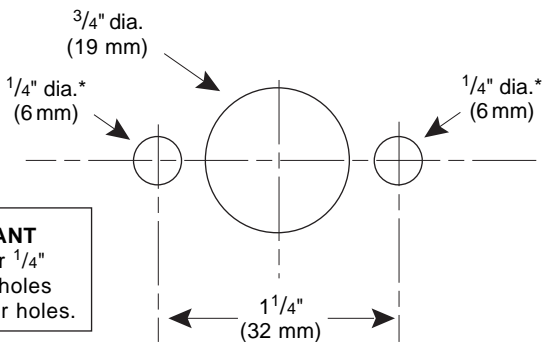
Use this as edge of door when boring hole
Mark center of door thickness



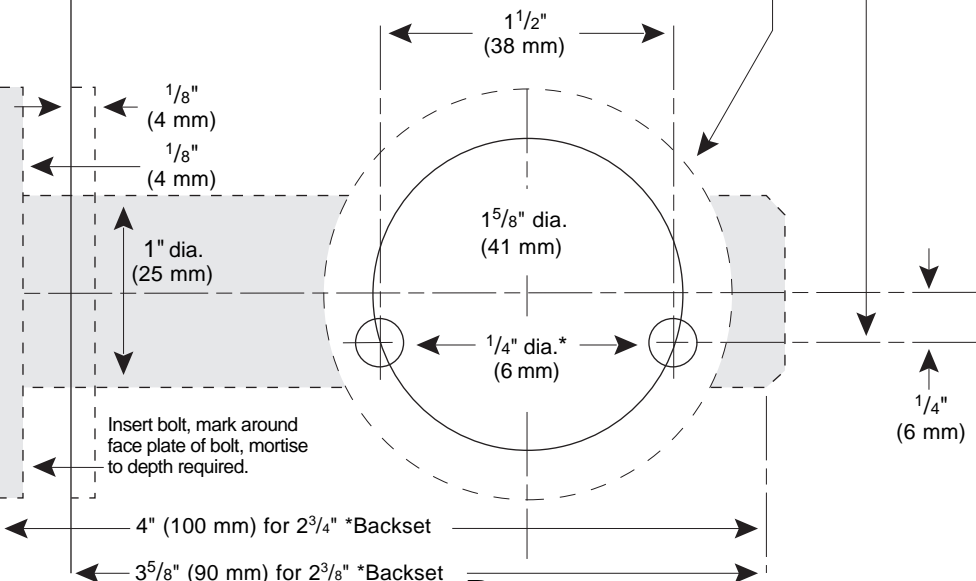
Bore
1" (25 mm) dia.
latch hole

Edge of door for 2 3/8" (60 mm) Backset
(use 2 3/4" (70 mm) backset for deadbolt cutout)

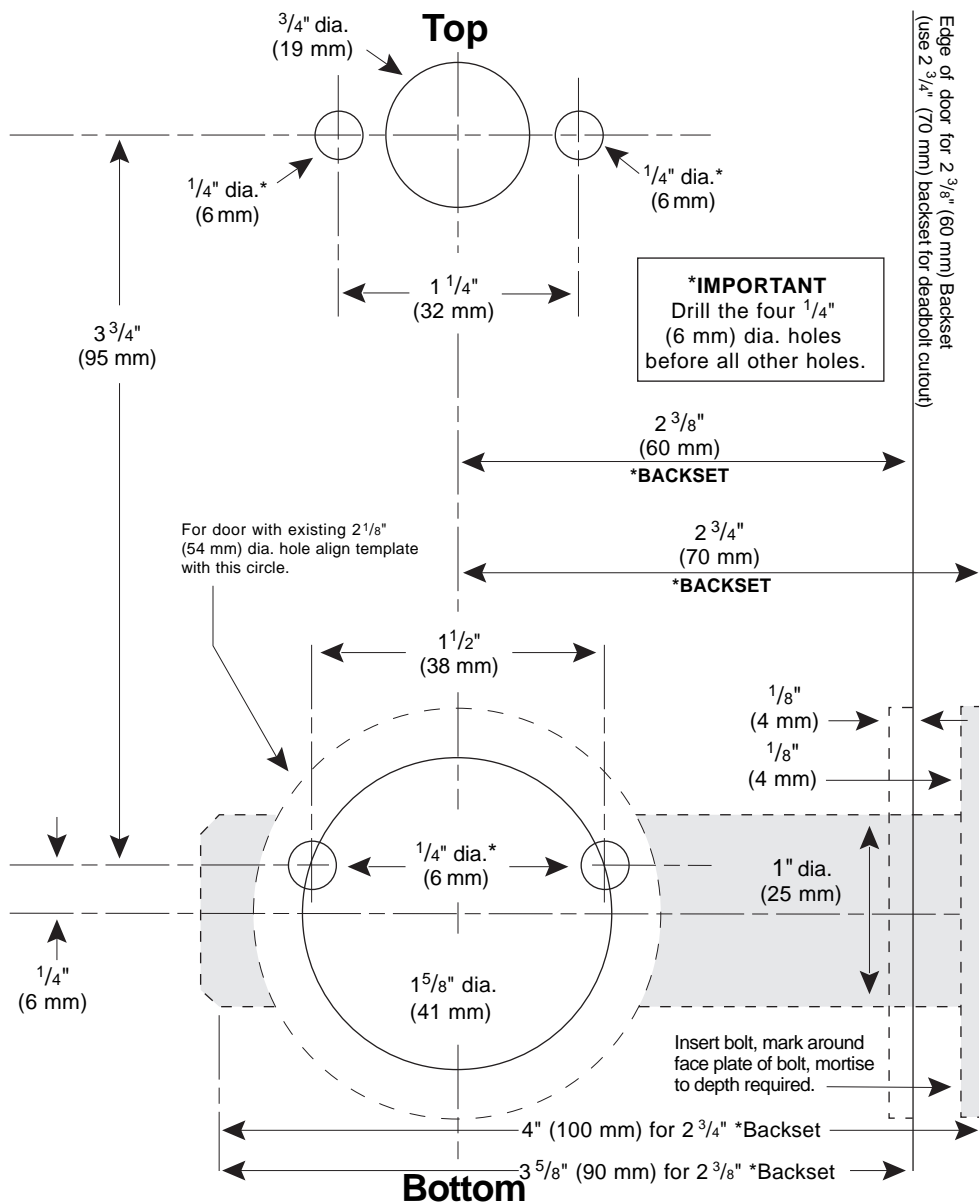
Top



For door with existing $2\frac{1}{8}"$ (54 mm) dia. hole align template with this circle.

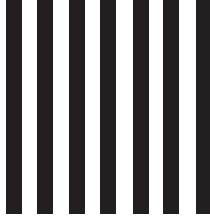


Bottom





NO POSTAGE
NECESSARY
IF MAILED
IN THE
UNITED STATES



BUSINESS REPLY MAIL

FIRST-CLASS MAIL

PERMIT NO. 1563

WINSTON-SALEM, NC

POSTAGE WILL BE PAID BY ADDRESSEE

KABA ACCESS CONTROL
2941 INDIANA AVENUE
WINSTON-SALEM, NC 27199-3770



REGISTRATION CARD

Thank you for purchasing our product. In order to protect your investment and to enable us to better serve you in the future, please fill out this registration card and return it to Kaba Access Control, or register online at www.kabaaccess.com.

Name	
Position	
Company	
Address	
City	
State	ZIP (Postal Code)
Country	
Phone	
Email	
Name of Dealer Purchased From	
Date of Purchase	
Lock Model Number	

This lock will be used in what type of facility?

- | | | |
|--|---|---|
| <input type="checkbox"/> Commercial Building | <input type="checkbox"/> Industrial / Manufacturing | <input type="checkbox"/> Airport |
| <input type="checkbox"/> College/University | <input type="checkbox"/> Government / Military | <input type="checkbox"/> School/Educational |
| <input type="checkbox"/> Hospital/Healthcare | <input type="checkbox"/> Other (please specify) | |

What area is being secured with this lock? (e.g. Front Door, Common Door, Exercise Room)

This lock is:

- ☐ New Installation
- ☐ Replacing a conventional keyed lock
- ☐ Replacing a Kaba Mechanical Pushbutton Lock
- ☐ Replacing a Kaba Electronic Access Control
- ☐ Replacing a keyless Lock other than Kaba

How did you learn about Kaba Access Control Pushbutton Locks?

- | | | | |
|--|---------------------------------------|---|---|
| <input type="checkbox"/> Advertisement | <input type="checkbox"/> Previous Use | <input type="checkbox"/> Internet / Web | <input type="checkbox"/> Another Use |
| <input type="checkbox"/> Locksmith | <input type="checkbox"/> Maintenance | <input type="checkbox"/> Training Class | <input type="checkbox"/> Other (please specify) |

What was your reason for buying this lock?

Who installed your lock?

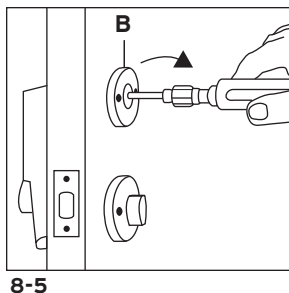
- | | | |
|------------------------------------|--------------------------------------|--------------------------------|
| <input type="checkbox"/> Locksmith | <input type="checkbox"/> Maintenance | <input type="checkbox"/> Other |
|------------------------------------|--------------------------------------|--------------------------------|

☐ Check here if you would like more information on Kaba Access Control locks.

Notes

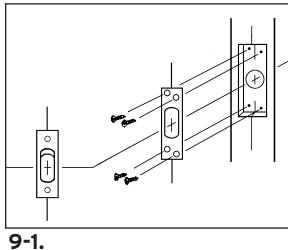
Verify the Combination Change Assembly

- H-8** Insert the tip of a Phillips-head screwdriver into the combination change assembly **B** (See Figure 8-5).
- H-9** Turn the central piece to the right (clockwise) until it stops, **DO NOT FORCE**, (approximately 30° degrees) (See Figure 8-5).
- H-10** Remove the screwdriver; the central piece should automatically return to its initial position.
- H-11** If the central piece jams and does not return to its initial position, loosen the two thru-bolts and push the combination change assembly **B** (See Figure 8-5) upward or downward to properly center the tailpiece of the combination change assembly, then tighten the two thru-bolts, and repeat Steps H-8 to H-11.



I. INSTALLING THE STRIKE

- I-1** Mark the vertical and horizontal center lines of the strike on the door frame by using the center line of the bolt. Make sure the vertical and horizontal center lines are well aligned with the bolt center lines.
- I-2** Where the center lines meet, drill a 1" (25 mm) diameter by 1 1/8" (28 mm) deep hole to guarantee that the bolt will be completely extended in the door jam (See Figure 9-1).
- I-3** Mortise (chisel out) the marked area to 1/8" (3 mm) deep so that the strike will be flush with the door frame.
- I-4** Secure the strike with the four screws provided.
- I-5** Close the door and turn the thumbturn to extend the bolt to ensure proper alignment with the strike plate hole.

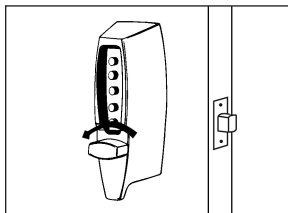


J. SETTING A NEW COMBINATION

IMPORTANT: The following steps must be performed while the DOOR IS OPEN.

The factory-set code is 2 and 4 pressed simultaneously, then 3. This code should be changed as soon as the lock is installed.

- J-1** Turn the outside thumbturn to the left (counterclockwise) to the stop position (See Figure 10-1) and return it to the right (clockwise) slowly to the horizontal position. This will clear any random buttons previously depressed.



J-2 Enter the existing code (**See Figure 10-2**).

J-3 Insert a Phillips-head screwdriver into the center of the combination change sleeve. Gently turn to the right (clockwise) approximately $\frac{1}{8}$ " (3 mm) (**See Figure 10-3**). A slight click should be felt. **Do not force.**

IMPORTANT: When removing the screwdriver, the central piece must return to its initial position, if not, set it back to its original position using the screwdriver; see Section H-8 to H-11. *Verify the Combination Change Assembly.*

J-4 Turn the outside thumbturn to the left (counterclockwise) to the stop position, once only, and slowly return it to the right (clockwise) to the horizontal position (**See Figure 10-4**), to clear the existing code from the mechanism.

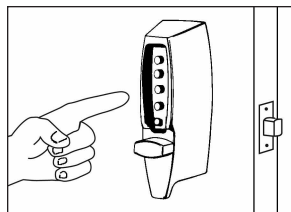
J-5 Select a new code and write it down (some or all of the buttons may be used for your new code, pressed individually or simultaneously).

NOTE: A button may be used only once.

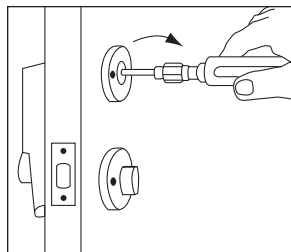
J-6 With the **door open**, enter your new code. Depress each button fully and release. A slight click should be felt (**See Figure 10-5**).

J-7 Turn the outside thumbturn to the right (clockwise) to the stop position (**See Figure 10-6**). The bolt should retract. Now release the thumbturn. Try to turn the thumbturn to the right (clockwise). The thumbturn should not turn clockwise unless the correct combination is entered. If it turns and retracts the bolt without depressing any of the buttons, see J-9.

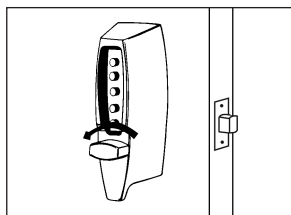
NOTE: Excessive force will result in slipping the thumbturn 180° degrees. The slipping mechanism, or force-proof clutch, protects the lock's internal mechanism from forced entry.



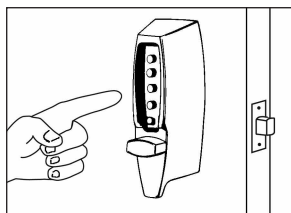
10-2



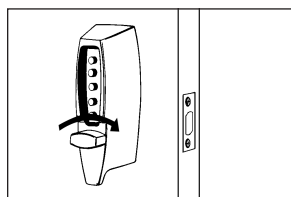
10-3



10-4

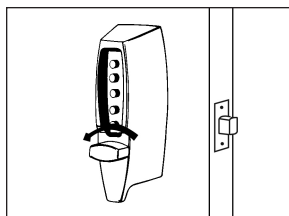


10-5

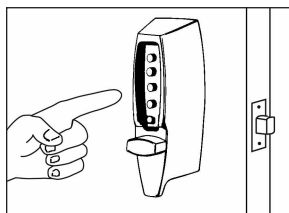


10-6

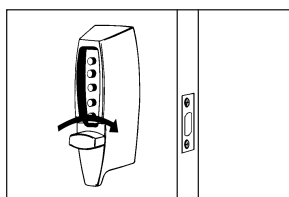
J-8 If a wrong combination is entered after the desired combination has been programmed into the lock, turn the outside thumbturn to the left (counterclockwise) to the stop position and release (**See Figure 10-7**). This will clear any previously depressed buttons. Enter the correct new combination (**See Figure 10-8**). Turn the thumbturn to the right (clockwise) to the stop position and release (**See Figure 10-9**). The thumbturn should rotate. The bolt will be retracted flush with the face plate. The correct combination must be entered each time you want to unlock the door.



10-7



10-8



10-9

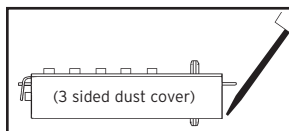
J-9 If, without entering the combination, you can retract the bolt by turning the outside thumbturn to the right, it means that a step was done out of order and therefore no combination was entered. In this case, you must repeat J-1 to J-7 but omit J-2, as the lock does not have a combination.

K. INSTRUCTIONS FOR RESETTING UNKNOWN COMBINATIONS

Remove and set aside the back plate held by on 4 screws. Remove the drive cam assembly located on the control shaft on the back of the chamber. Remove the combination chamber, held by 2 screws, from the lock.

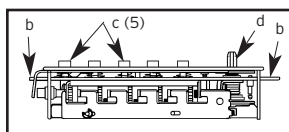
To remove the 3-sided dust cover marked "Kaba Simplex," place the combination chamber in the position below.

K-1 Place a small screwdriver on the edge of the 3-sided dust cover and push down on the screwdriver (**See Figure 11-1**). The cover should pop loose. Once it does, pull the cover off of the combination chamber.



11-1

K-2 Hold the chamber in one hand by the screw tab (b) on each end with the key-stems (c) facing you and the control shaft (d) at the bottom (**See Figure 11-2**).

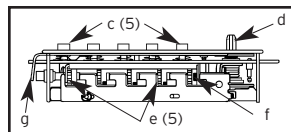


11-2

K-3 Rotate the control shaft (d) counter-clockwise and release to clear the chamber (**See Figure 11-2**).

K-4 Look at the 5 code gears (e). If any code gear pockets (f) are already at the shear line (open position), ignore them. They are not used in the combination (**See Figure 11-3**).

K-5 Find the code gear pocket/s (f) that is farthest away from the shear line (open position). Depress that key-stem/s (c) and release (**See Figure 11-3**).



11-3

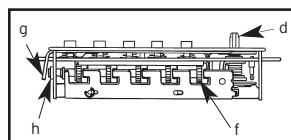
K-6 Find the code gear pocket/s (f) that is the next farthest away from the shear line (open position). Depress that key-stem/s (c) and release (**See Figure 11-3**).

K-7 Repeat step K-6 until all code gear pockets (f) are at the shear line (open position).

K-8 If all the code gear pockets (f) are not lined up at the shear line (open position), start over at step K-3.

K-9 Depress the lockout slide (g) at the top of the chamber and release. (looks like one end of a spark plug) (**See Figure 11-4**).

K-10 Rotate the control shaft (d) counter-clockwise to clear the chamber and release. The lockout slide (g) should pop out (button will not move yet) (**See Figure 11-4**).



11-4

K-11 Depress the key-stem/s (c) that you want in your new combination, releasing each after it is depressed (**See Figure 11-2**).

K-12 Once you have depressed all the digits in your new combination, turn the control shaft (d) clockwise (**See Figure 11-4**). The code change button (h) under lockout slide (g), should pop up (**See Figure 11-4**). Your new combination is now set.

K-13 Look at the code gear pockets (f). The numbers in you new combination should not be at the shear line (open position) (**See Figure 11-3**).

Reinstallation: Replace the 3-sided dust cover marked "Kaba Simplex." Make sure the staked joints on both end plates fit through the slots on the dust cover. Stake the end 2 plate joints. Replace the combination chamber into the lock using the same 2 screws removed earlier. Slip the drive cam assembly back on the control shaft of the chamber assuring it is in the same position as prior to removal. Re-secure the back plate, assuring the tailpieces are seated correctly using the same 2 screws removed earlier.

Testing: Enter the combination you preset during the reset process. Turn the outside thumbturn to the right (clockwise). The latch should retract. If the latch does not retract, turn the outside thumbturn left (counter-clockwise) and release, then enter the code again.

L. TROUBLESHOOTING

- ❓ Lock fails to open when combination is entered and outside thumbturn is rotated clockwise.
- ➔ Buttons were not fully depressed when the combination was entered.
- ➔ Lock not cleared of previous attempts to enter access codes.
- 🔑 Turn the outside thumbturn to the left to clear the wrong entry. Enter the combination making sure you feel each button click to know that it was depressed fully. Turn thumbturn clockwise.
- ❓ Turning outside thumbturn clockwise always retracts latch without depressing any buttons.
- ➔ Lock is in zero combination.
- 🔑 Follow the procedure for setting a new combination (Section J, but omit Step J-2).
- ❓ Inside thumbturn only retracts bolt partially or not at all, in either clockwise or counterclockwise direction.
- ➔ Bolt was not properly installed.
- 🔑 Remove and re-install the bolt. Review and follow instructions in Section E.
- ❓ After setting a new combination, the lock works one time only, then fails to open.
- ➔ Buttons of intended combination were not fully depressed when changing combination.
- 🔑 This is a lost combination situation. Review and follow instructions in Section K.



For technical assistance please call
1-800-849-TECH (8324) or 336-725-1331

[illegible]



Kaba Access Control
2941 Indiana Avenue Winston-Salem, NC 27105 USA
Tel: (800) 849-8324 (336) 725-1331
Fax: (800) 346-9640 (336) 725-3269
www.kabaaccess.com